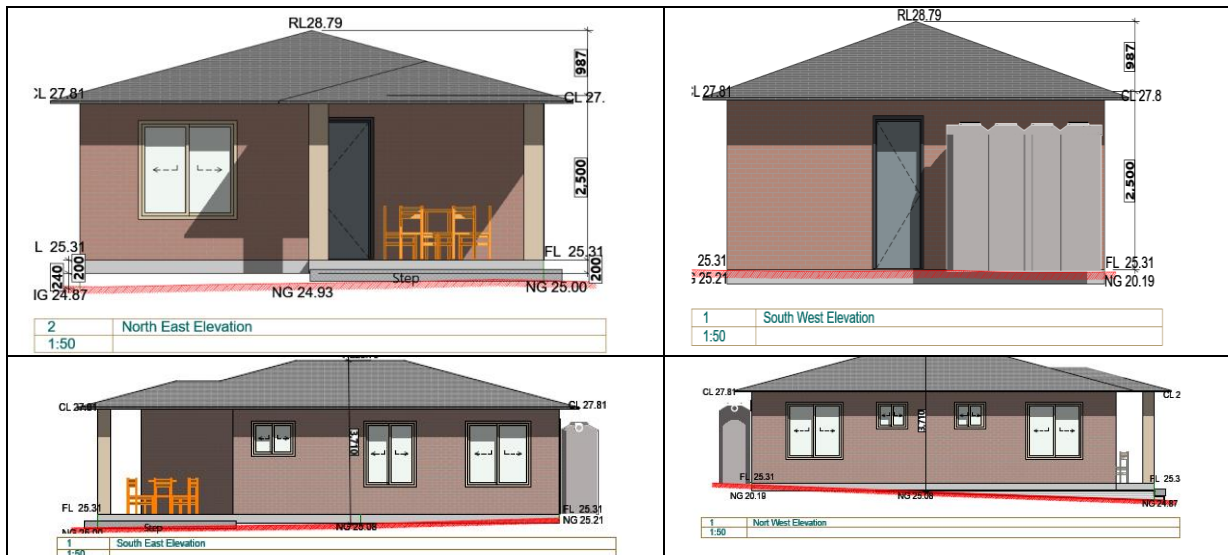
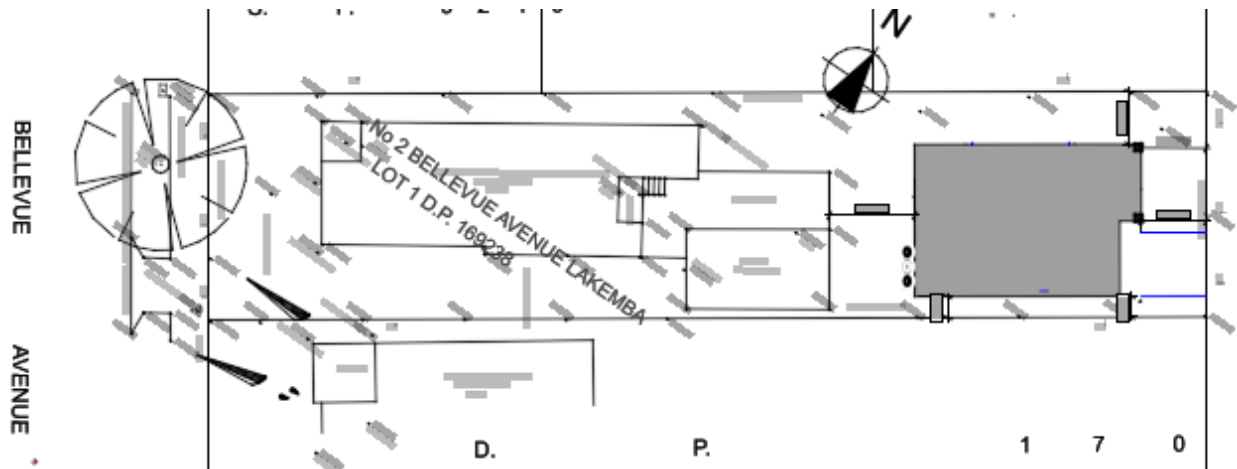


# Neighbour Notification

2 Bellevue Avenue Lakemba NSW 2195



Planning and Architecture Research for Sustainable Housing Integrity (PARSHI)

## Office Address

Office2, Level 1, 208A Beamish St, Campsie, NSW 2194

Contact: Mob: 0425834402, ph 02 80331960

[www.parshi.com.au](http://www.parshi.com.au), Email: [Info@parshi.com.au](mailto:Info@parshi.com.au)

